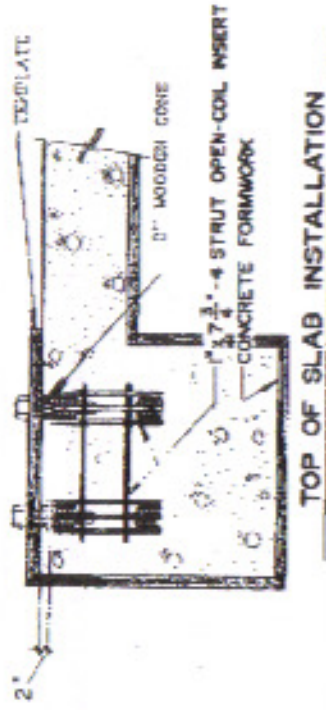
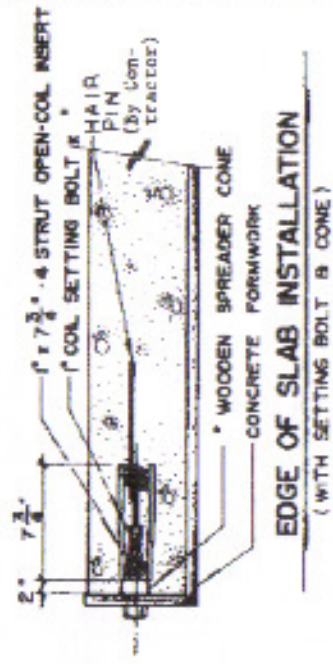
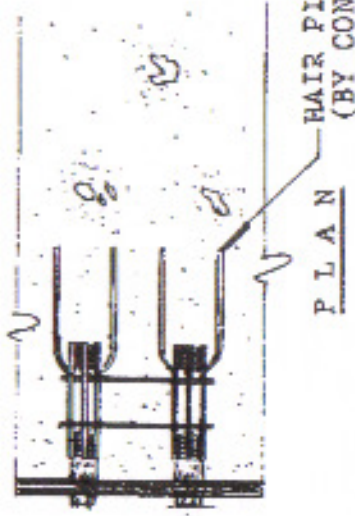
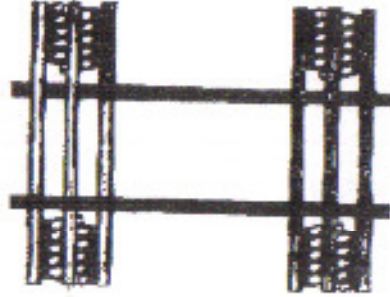


INSTALLATION INSTRUCTIONS

1. Grease and assemble 1"φx6" lg. setting bolts to inserts provided.
2. Install inserts typically as shown for your type of installation.
3. After concrete is dry, remove setting bolts and reuse for the next tie-in floor.
4. Use 1"φx5" coil bolts (provided) to install foot plates as per Installation drawings.



DESCRIPTION:

1" x 7 3/4" - 4 STRUT OPEN-COIL INSERTS
(DOUBLE)

DATE: 5/19/82

DRAWN BY: AS

DRWG. NO: 700107