

Clark A McMurtry PE
September 22, 1994
Dwg No: 94092201C

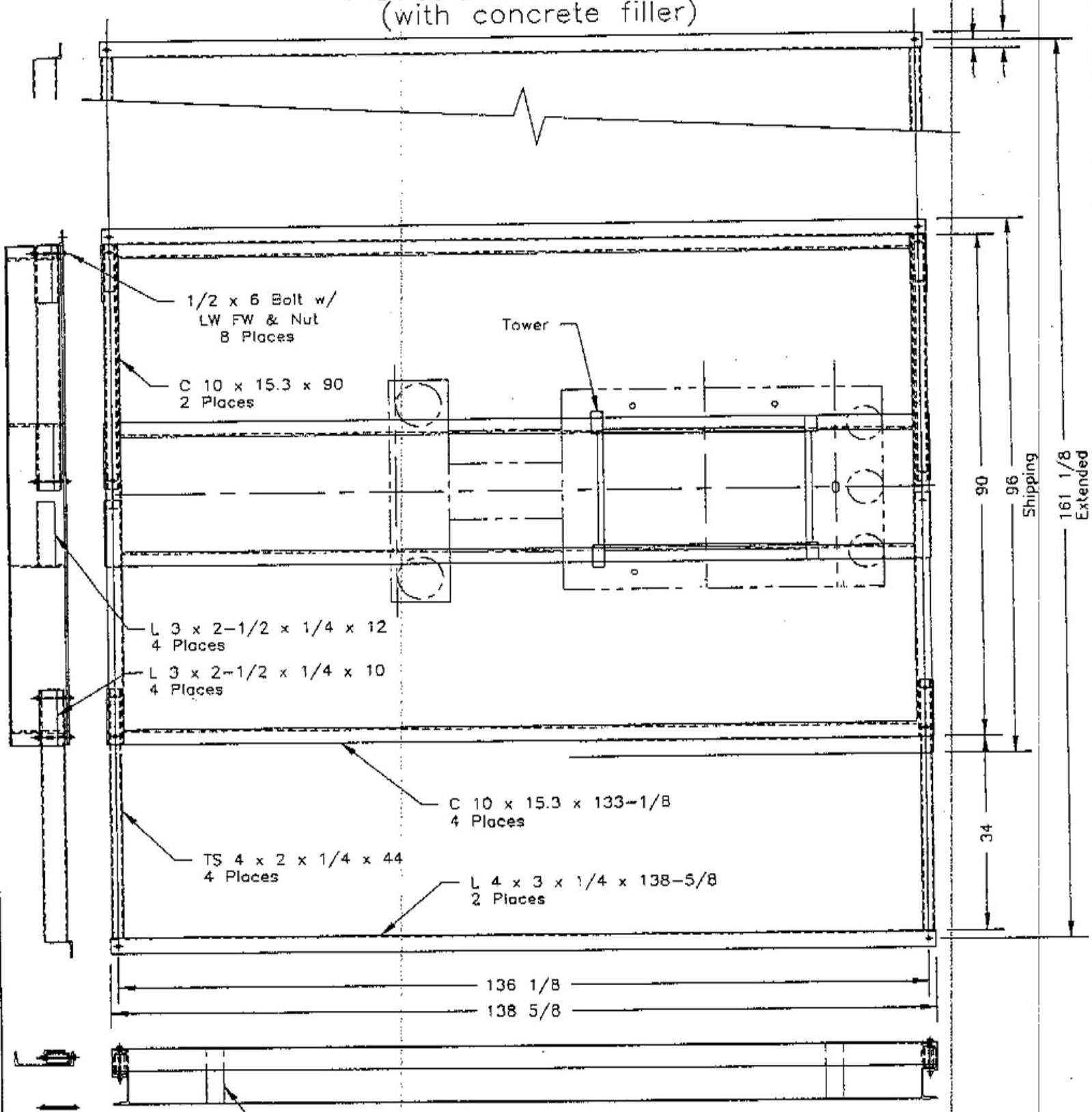
US-60-1R
Portable Base

Lewis

Hoist

Am 1/21/96

General Arrangement Portable Base Pad (with concrete filler)



1/2 x 6 Bolt w/
LW FW & Nut
8 Places

C 10 x 15.3 x 90
2 Places

Tower

L 3 x 2-1/2 x 1/4 x 12
4 Places

L 3 x 2-1/2 x 1/4 x 10
4 Places

C 10 x 15.3 x 133-1/8
4 Places

TS 4 x 2 x 1/4 x 44
4 Places

L 4 x 3 x 1/4 x 138-5/8
2 Places

1 9/16
3

90
96
Shipping

161 1/8
Extended

136 1/8

138 5/8

1/2 x 3 FB x 9-1/4
8 Places

Estimated Weight 11,000 Lbs